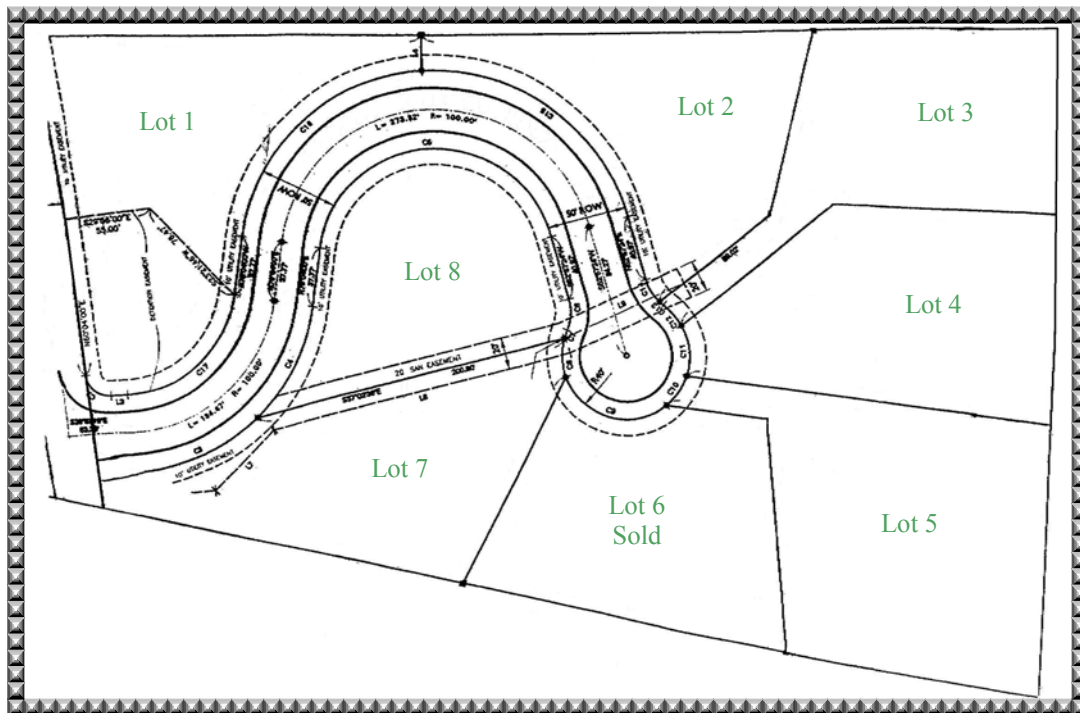


The Links



Rare chance to have your plan bid competitively! Architectural lifestyle plans are available for your builder or ours to bid. Located in the heart of Blue Ash across from the Carpenter's Run Golf Course, the developer plans a water feature at the entrance and a putting green if all residents desire these amenities. A very special Opportunity on fully developed lots.

ADDRESS: The Links At Carpenters
SUBURB: Blue Ash

LOT SIZE: Up to .699 Acres
STYLE: Life style

EASEMENTS: Of Record
RESTRICTIONS: Of Record

Quoting: From \$195,000



Exclusively Represented By: Gail S. Coughlin
Voice Mail: 247-6731 Home: 871-6885 Mobile: 604-1731
Photos available at: www.gcoughlin.com



COLDWELL BANKER WEST SHELL

OWNED & OPERATED BY NRT, INC.

