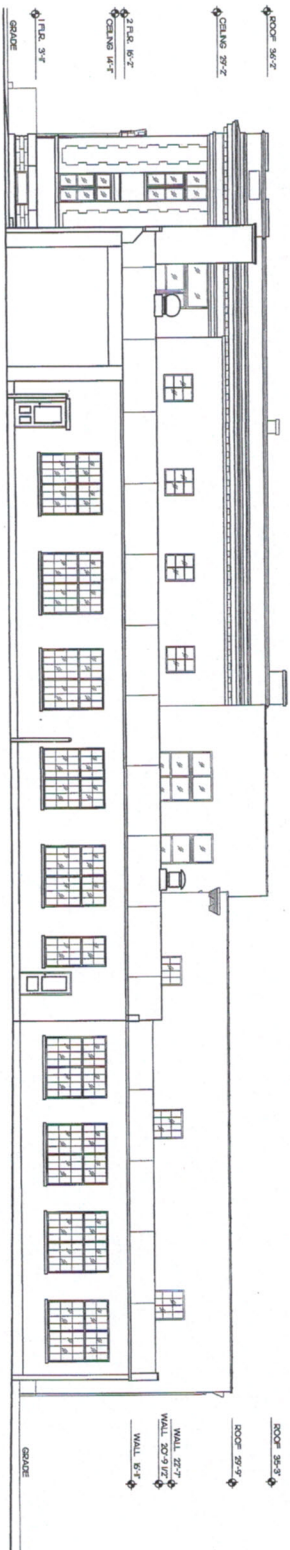


EXISTING SOUTH ELEVATION
SCALE 1/8" = 1'-0"



EXISTING EAST ELEVATION
SCALE 1/8" = 1'-0"



REVISIONS

CITIZENS' TELEPHONE CO.
SOUTH EXCHANGE BUILDING
BUILDING REMODELING
103-113 EAST FOURTH STREET
COVINGTON, KY



DUNN & TITUS P.S.C.
THOMAS R. DUNN P.E., JAMES L. TITUS P.H.D., AIA
ARCHITECTS AND ENGINEERS, ONE CABIN LANE, COVINGTON, KY 40312-2823 • FAX 502-232-2444
700 SOUTH ST., P.O. BOX 2197, COVINGTON, KY 40312 • TELEPHONE 502-232-2444



JANUARY 2011
PROJECT NUMBER
DUNN BTVA
A-3

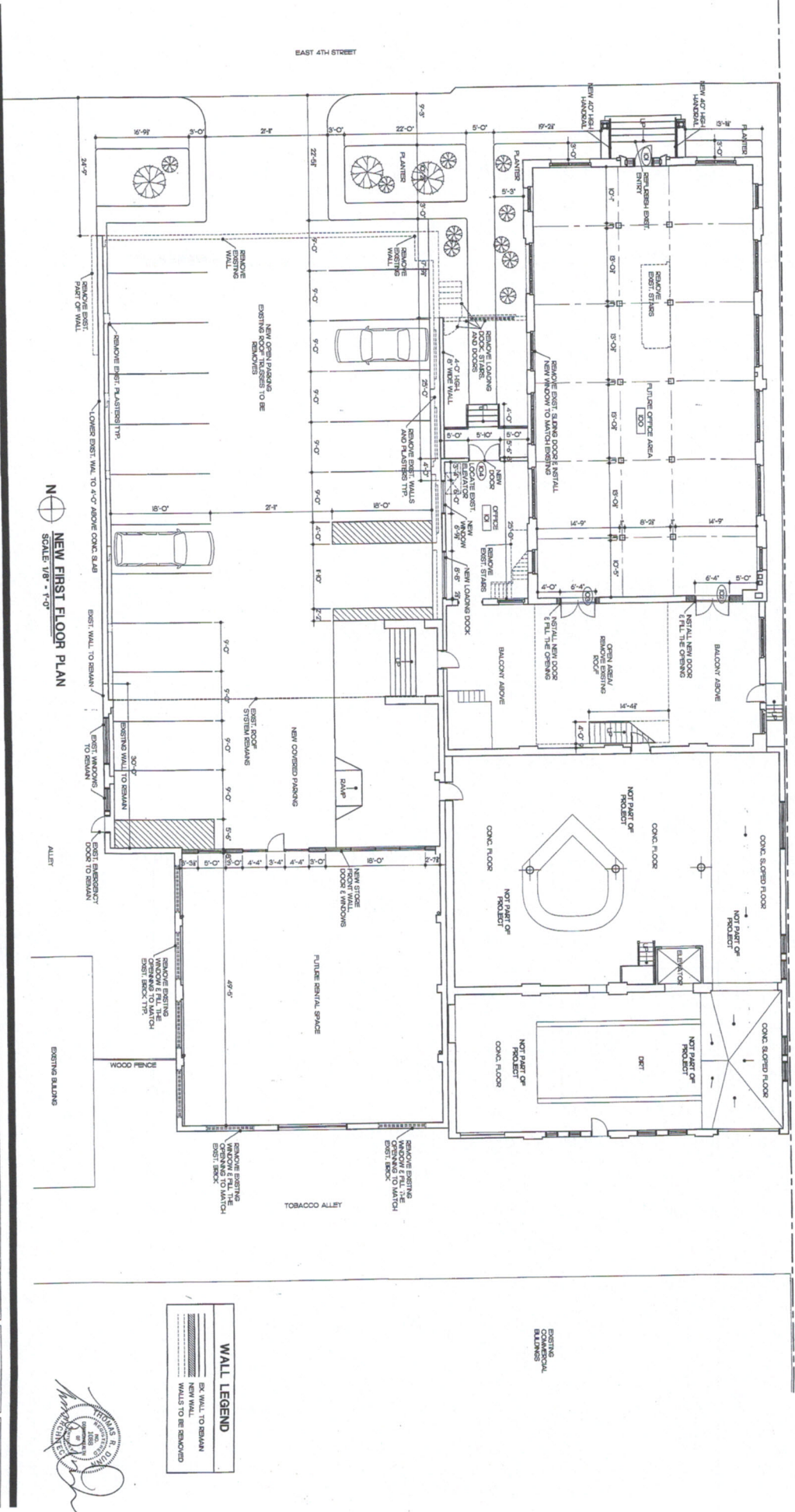
REVISIONS

CITIZENS' TELEPHONE CO.
SOUTH EXCHANGE BUILDING
BUILDING REMODELING
103-113 EAST FOURTH STREET COVINGTON, KY



DUNN & TITUS RSC
ARCHITECTS
THOMAS R. DUNN ARCHITECT
BRENDAN R. TITUS ARCHITECT
103 EAST FOURTH STREET
PO BOX 2197 COVINGTON, KY 40003
TELEPHONE 931-481-4400 FAX 931-481-4400

JANUARY 201
PROJECT ARCHITECT
DUNN & TITUS
A-5



ALLEY

WALL LEGEND

(Symbol: Dashed line)	EXISTING COMMERCIAL BUILDING
(Symbol: Solid line)	EXISTING WALLS TO REMAIN
(Symbol: Dotted line)	WALLS TO BE REMOVED



REVISIONS

CITIZENS' TELEPHONE CO.
SOUTH EXCHANGE BUILDING
BUILDING REMODELING
103-113 EAST FOURTH STREET COVINGTON, KY

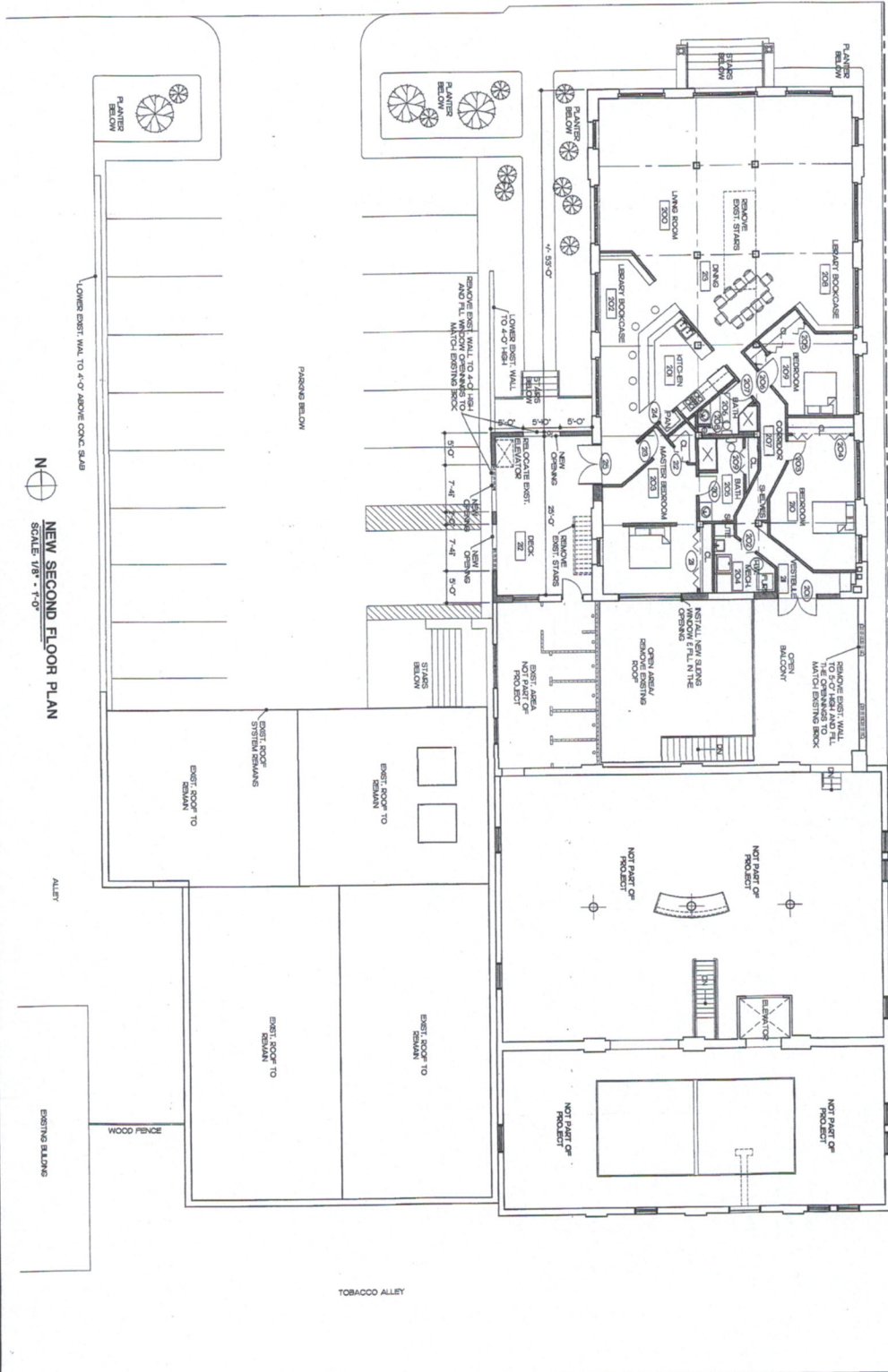


DUNN & TITUS PSC
THOMAS R. DUNN ARCHITECT JAMES L. TITUS DESIGN / CONSTRUCTION
DESIGN: 103-113 EAST FOURTH STREET, COVINGTON, KY 40303-4298 / FAX: 502-332-7444
P.O. BOX 31377, COLUMBIA, KY 40202 / TELEPHONE: 502-332-4400 / FAX: 502-332-4298



JANUARY 2001
PROJECT NUMBER
DUNN 0113AS
A-6

EAST 4TH STREET



NEW SECOND FLOOR PLAN
SCALE: 1/8" = 1'-0"

WALL LEGEND

(Symbol: Dashed line)	EXIST. WALL TO REMAIN
(Symbol: Solid line)	NEW WALL
(Symbol: Dotted line)	WALLS TO BE REMOVED



REVISIONS

CITIZENS' TELEPHONE CO.
SOUTH EXCHANGE BUILDING
BUILDING REMODELING
103-113 EAST FOURTH STREET COVINGTON, KY



DUNN & TITUS P.S.C.
THOMAS R. DUNN ARCHITECT
DESIGN/BUILD ARCHITECTURE
JAMES L. TITUS DESIGN / CONSTRUCTION
PLANNING & INTERIOR DESIGN
P.O. BOX 2197, COVINGTON, KY 40121 TELEPHONE 859-431-2440 FAX 859-431-2450

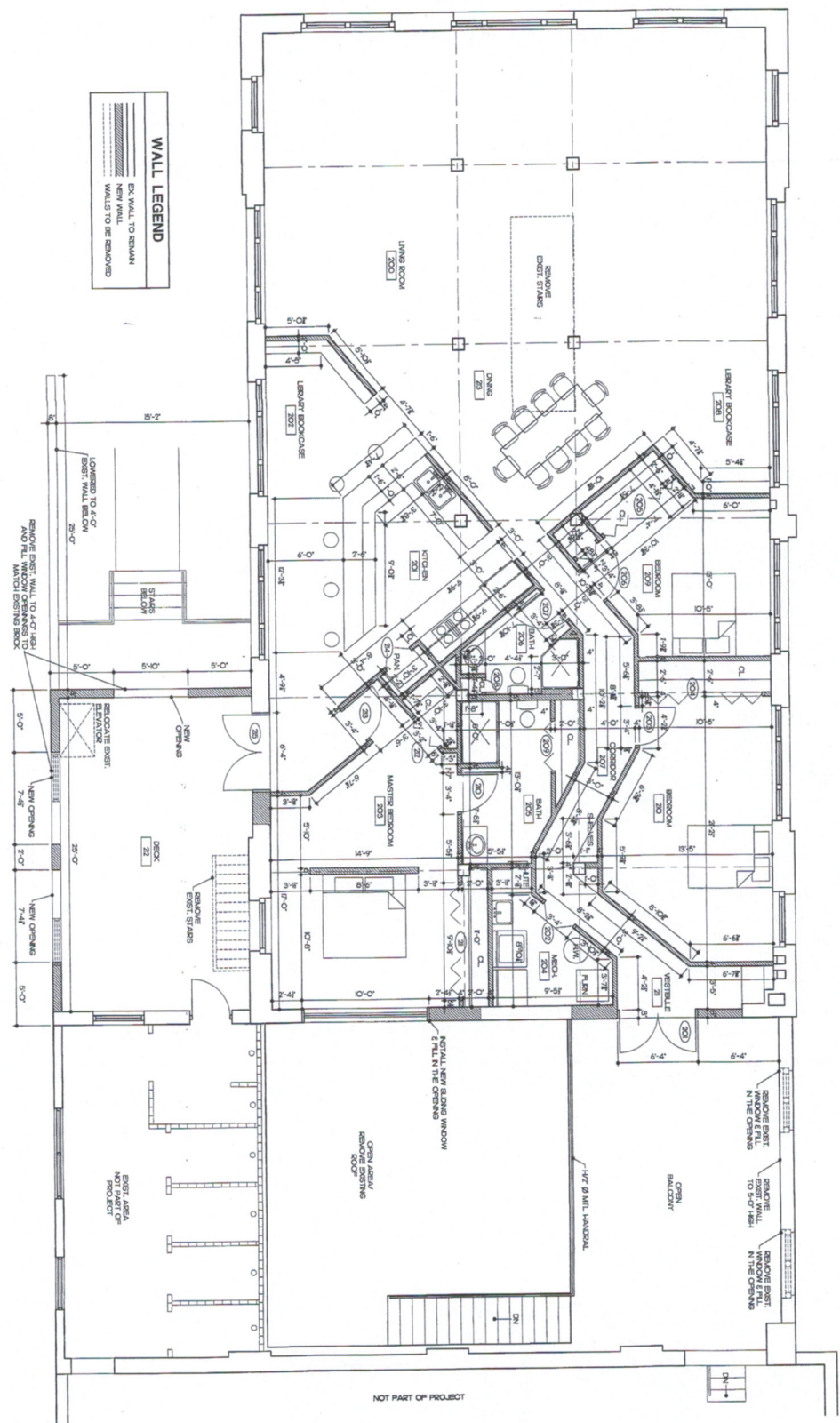


JANUARY 2001
PROJECT NUMBER
DRAWN BY: A.S.
A-7

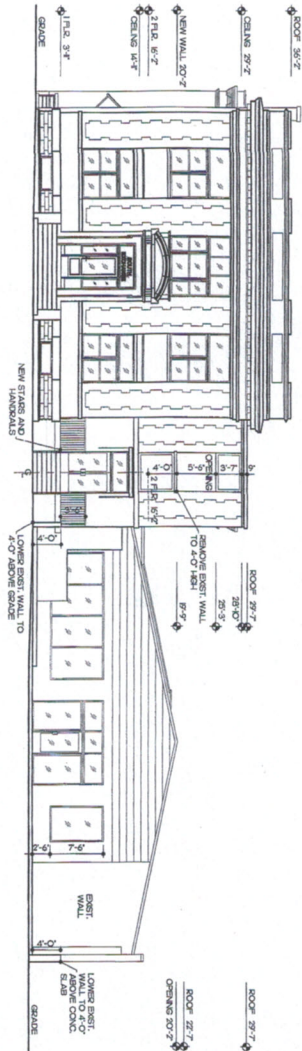
WALL LEGEND

	EX. WALL TO REMAIN
	NEW WALL
	WALLS TO BE REMOVED

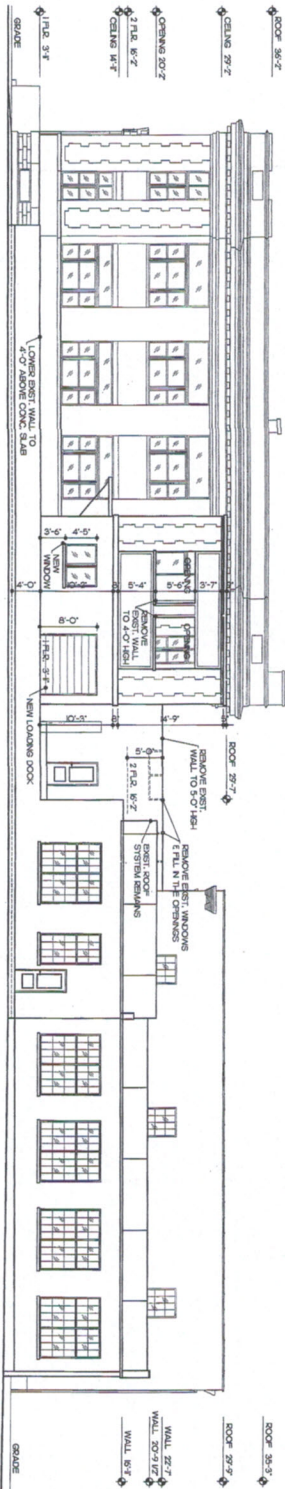
N
NEW ENLARGED SECOND FLOOR PLAN
SCALE 1/4" = 1'-0"



THOMAS R. DUNN
REGISTERED PROFESSIONAL ARCHITECT
NO. 10008
STATE OF KENTUCKY



NEW SOUTH ELEVATION
SCALE: 1/8" = 1'-0"



NEW EAST ELEVATION
SCALE: 1/8" = 1'-0"



REVISIONS

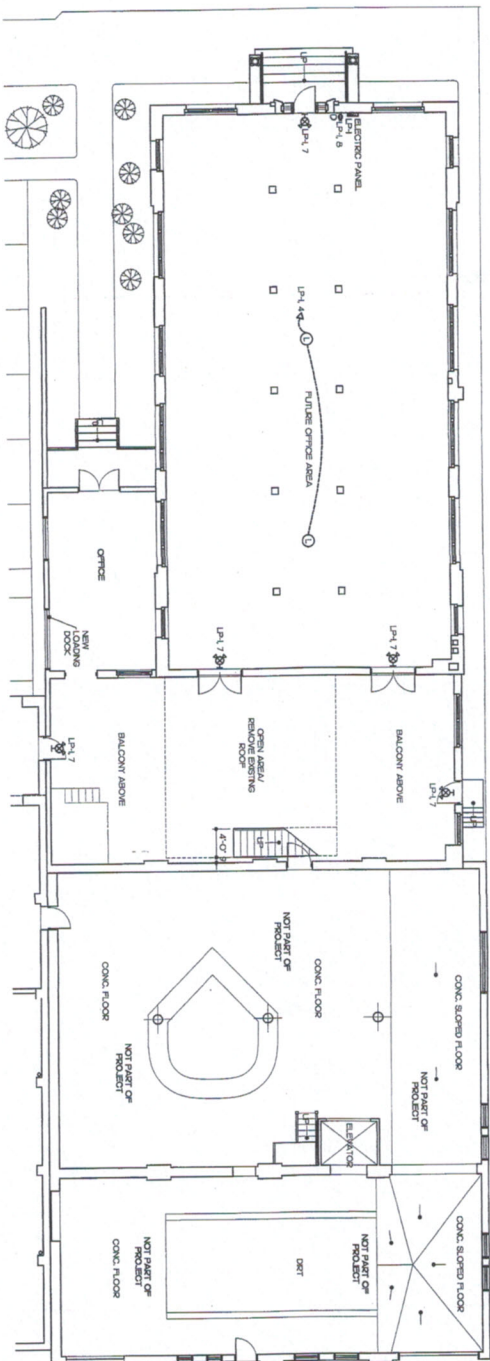
CITIZENS' TELEPHONE CO.
SOUTH EXCHANGE BUILDING
REMODELING
103-113 EAST FOURTH STREET COVINGTON, KY



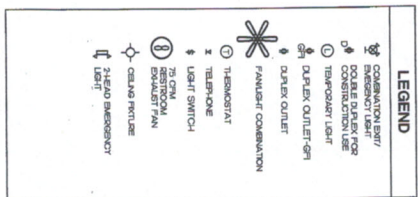
DUNN & TITUS P.C.
THOMAS R. DUNN, P.A. JAMES L. TITUS, P.H.D., AIA
200 GARDNER ROAD - GREENHALL, OHIO 44131 - TELEPHONE 313-842-8824 FAX 313-842-8824
700 SOUTH 31ST - P.O. BOX 2157 - COVINGTON, KY 41012 - TELEPHONE 502-841-4440



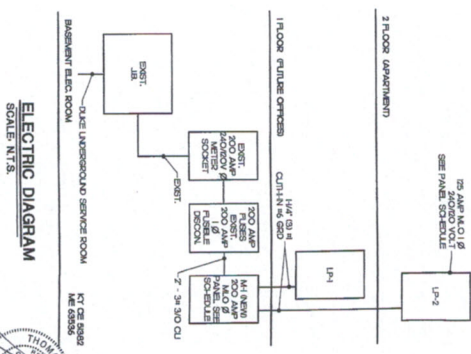
JANUARY 2001
PROJECT NO. 010009
DRAWN BY: AAL
A-9



FIRST FLOOR ELECTRICAL PLAN
SCALE: 1/8" = 1'-0"



LOAD BRND	SCHEDULE	CONNECTION				LOAD BRND
		A	B	C	D	
WATER HEATING	SC1 1	1	0	0	2	WATER HEATING
WATER HEATING	SC2 1	0	0	0	2	WATER HEATING
WATER HEATING	SC3 1	0	0	0	2	WATER HEATING
WATER HEATING	SC4 1	0	0	0	2	WATER HEATING
WATER HEATING	SC5 1	0	0	0	2	WATER HEATING
EMERGENCY	SC7 1	0	0	0	2	EMERGENCY
EMERGENCY	SC8 1	0	0	0	2	EMERGENCY
EMERGENCY	SC9 1	0	0	0	2	EMERGENCY
EMERGENCY	SC10 1	0	0	0	2	EMERGENCY
EMERGENCY	SC11 1	0	0	0	2	EMERGENCY
EMERGENCY	SC12 1	0	0	0	2	EMERGENCY
EMERGENCY	SC13 1	0	0	0	2	EMERGENCY
EMERGENCY	SC14 1	0	0	0	2	EMERGENCY
EMERGENCY	SC15 1	0	0	0	2	EMERGENCY
EMERGENCY	SC16 1	0	0	0	2	EMERGENCY
EMERGENCY	SC17 1	0	0	0	2	EMERGENCY
EMERGENCY	SC18 1	0	0	0	2	EMERGENCY
EMERGENCY	SC19 1	0	0	0	2	EMERGENCY
EMERGENCY	SC20 1	0	0	0	2	EMERGENCY
EMERGENCY	SC21 1	0	0	0	2	EMERGENCY
EMERGENCY	SC22 1	0	0	0	2	EMERGENCY
EMERGENCY	SC23 1	0	0	0	2	EMERGENCY
EMERGENCY	SC24 1	0	0	0	2	EMERGENCY
EMERGENCY	SC25 1	0	0	0	2	EMERGENCY
EMERGENCY	SC26 1	0	0	0	2	EMERGENCY
EMERGENCY	SC27 1	0	0	0	2	EMERGENCY
EMERGENCY	SC28 1	0	0	0	2	EMERGENCY
EMERGENCY	SC29 1	0	0	0	2	EMERGENCY
EMERGENCY	SC30 1	0	0	0	2	EMERGENCY
EMERGENCY	SC31 1	0	0	0	2	EMERGENCY
EMERGENCY	SC32 1	0	0	0	2	EMERGENCY
EMERGENCY	SC33 1	0	0	0	2	EMERGENCY
EMERGENCY	SC34 1	0	0	0	2	EMERGENCY
EMERGENCY	SC35 1	0	0	0	2	EMERGENCY
EMERGENCY	SC36 1	0	0	0	2	EMERGENCY
EMERGENCY	SC37 1	0	0	0	2	EMERGENCY
EMERGENCY	SC38 1	0	0	0	2	EMERGENCY
EMERGENCY	SC39 1	0	0	0	2	EMERGENCY
EMERGENCY	SC40 1	0	0	0	2	EMERGENCY
EMERGENCY	SC41 1	0	0	0	2	EMERGENCY
EMERGENCY	SC42 1	0	0	0	2	EMERGENCY
EMERGENCY	SC43 1	0	0	0	2	EMERGENCY
EMERGENCY	SC44 1	0	0	0	2	EMERGENCY
EMERGENCY	SC45 1	0	0	0	2	EMERGENCY
EMERGENCY	SC46 1	0	0	0	2	EMERGENCY
EMERGENCY	SC47 1	0	0	0	2	EMERGENCY
EMERGENCY	SC48 1	0	0	0	2	EMERGENCY
EMERGENCY	SC49 1	0	0	0	2	EMERGENCY
EMERGENCY	SC50 1	0	0	0	2	EMERGENCY
EMERGENCY	SC51 1	0	0	0	2	EMERGENCY
EMERGENCY	SC52 1	0	0	0	2	EMERGENCY
EMERGENCY	SC53 1	0	0	0	2	EMERGENCY
EMERGENCY	SC54 1	0	0	0	2	EMERGENCY
EMERGENCY	SC55 1	0	0	0	2	EMERGENCY
EMERGENCY	SC56 1	0	0	0	2	EMERGENCY
EMERGENCY	SC57 1	0	0	0	2	EMERGENCY
EMERGENCY	SC58 1	0	0	0	2	EMERGENCY
EMERGENCY	SC59 1	0	0	0	2	EMERGENCY
EMERGENCY	SC60 1	0	0	0	2	EMERGENCY
EMERGENCY	SC61 1	0	0	0	2	EMERGENCY
EMERGENCY	SC62 1	0	0	0	2	EMERGENCY
EMERGENCY	SC63 1	0	0	0	2	EMERGENCY
EMERGENCY	SC64 1	0	0	0	2	EMERGENCY
EMERGENCY	SC65 1	0	0	0	2	EMERGENCY
EMERGENCY	SC66 1	0	0	0	2	EMERGENCY
EMERGENCY	SC67 1	0	0	0	2	EMERGENCY
EMERGENCY	SC68 1	0	0	0	2	EMERGENCY
EMERGENCY	SC69 1	0	0	0	2	EMERGENCY
EMERGENCY	SC70 1	0	0	0	2	EMERGENCY
EMERGENCY	SC71 1	0	0	0	2	EMERGENCY
EMERGENCY	SC72 1	0	0	0	2	EMERGENCY
EMERGENCY	SC73 1	0	0	0	2	EMERGENCY
EMERGENCY	SC74 1	0	0	0	2	EMERGENCY
EMERGENCY	SC75 1	0	0	0	2	EMERGENCY
EMERGENCY	SC76 1	0	0	0	2	EMERGENCY
EMERGENCY	SC77 1	0	0	0	2	EMERGENCY
EMERGENCY	SC78 1	0	0	0	2	EMERGENCY
EMERGENCY	SC79 1	0	0	0	2	EMERGENCY
EMERGENCY	SC80 1	0	0	0	2	EMERGENCY
EMERGENCY	SC81 1	0	0	0	2	EMERGENCY
EMERGENCY	SC82 1	0	0	0	2	EMERGENCY
EMERGENCY	SC83 1	0	0	0	2	EMERGENCY
EMERGENCY	SC84 1	0	0	0	2	EMERGENCY
EMERGENCY	SC85 1	0	0	0	2	EMERGENCY
EMERGENCY	SC86 1	0	0	0	2	EMERGENCY
EMERGENCY	SC87 1	0	0	0	2	EMERGENCY
EMERGENCY	SC88 1	0	0	0	2	EMERGENCY
EMERGENCY	SC89 1	0	0	0	2	EMERGENCY
EMERGENCY	SC90 1	0	0	0	2	EMERGENCY
EMERGENCY	SC91 1	0	0	0	2	EMERGENCY
EMERGENCY	SC92 1	0	0	0	2	EMERGENCY
EMERGENCY	SC93 1	0	0	0	2	EMERGENCY
EMERGENCY	SC94 1	0	0	0	2	EMERGENCY
EMERGENCY	SC95 1	0	0	0	2	EMERGENCY
EMERGENCY	SC96 1	0	0	0	2	EMERGENCY
EMERGENCY	SC97 1	0	0	0	2	EMERGENCY
EMERGENCY	SC98 1	0	0	0	2	EMERGENCY
EMERGENCY	SC99 1	0	0	0	2	EMERGENCY
EMERGENCY	SC100 1	0	0	0	2	EMERGENCY



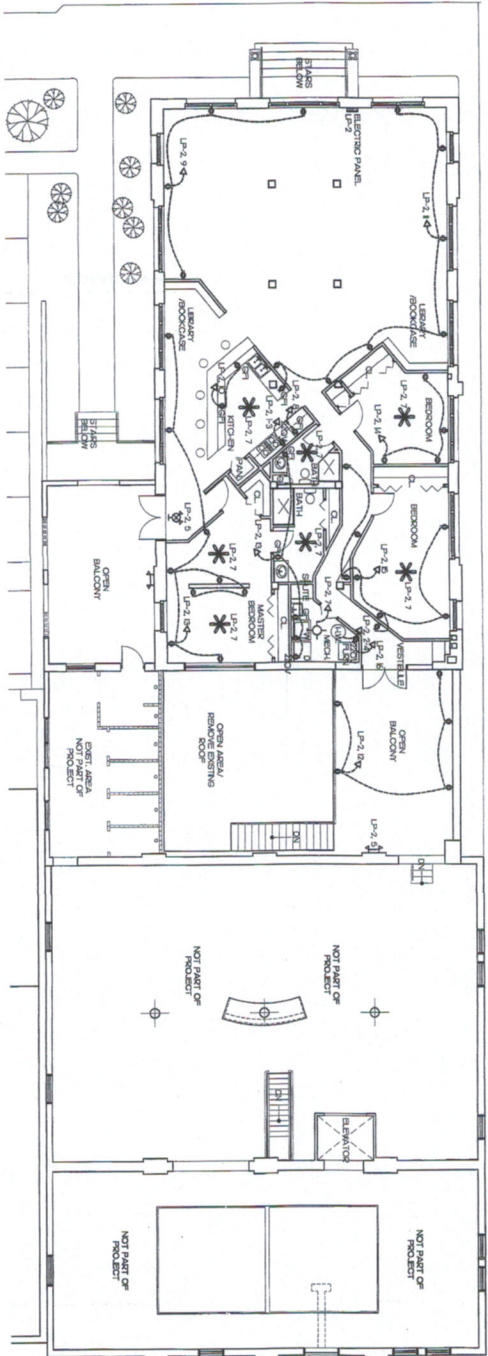
CITIZENS' TELEPHONE CO.
SOUTH EXCHANGE BUILDING
REMODELING
103-113 EAST FOURTH STREET COVINGTON, KY



DUNN & TITUS P.S.C.
THOMAS R. DUNN, P.E., A.I.A.
JAMES L. TITUS, P.E., A.I.A.
1000 SOUTH EXCHANGE BUILDING
COVINGTON, KY 40303
PH 502-522-9244
FAX 502-522-9244
700 SOUTH ST., P.O. BOX 2197 COVINGTON, KY 40302
PH 502-522-9244
FAX 502-522-9244



JANUARY, 201
PROJ. NO. 103-113
DRAWN BY J.A.S.
E-1



SECOND FLOOR ELECTRICAL PLAN
SCALE: 1/8" = 1'-0"

ELECTRICAL NOTES GENERAL

1. THE DRAWINGS IN THIS SECTION ARE DIAGNOSTIC AND ARE NOT INTENDED TO DEFINE QUANTITIES, EXACT PHYSICAL LOCATIONS, OR OTHER ELECTRICAL MATERIALS TO BE USED. THE CONTRACTOR SHALL VERIFY THE EXISTING AND PROPOSED MATERIALS AND CONDITIONS ON THE PROJECT BEFORE PROCEEDING. THE CONTRACTOR SHALL BE RESPONSIBLE FOR OBTAINING ALL NECESSARY PERMITS AND APPROVALS FROM THE LOCAL ELECTRICAL CONTRACTOR AND OTHER AFFECTING AGENCIES. THE CONTRACTOR SHALL BE RESPONSIBLE FOR OBTAINING ALL NECESSARY PERMITS AND APPROVALS FROM THE LOCAL ELECTRICAL CONTRACTOR AND OTHER AFFECTING AGENCIES. THE CONTRACTOR SHALL BE RESPONSIBLE FOR OBTAINING ALL NECESSARY PERMITS AND APPROVALS FROM THE LOCAL ELECTRICAL CONTRACTOR AND OTHER AFFECTING AGENCIES.
2. ALL WIRING SHALL BE INSTALLED IN ACCORDANCE WITH THE NATIONAL ELECTRICAL CODE (NEC) AS AMENDED BY THE LOCAL ELECTRICAL CONTRACTOR AND OTHER AFFECTING AGENCIES. THE CONTRACTOR SHALL BE RESPONSIBLE FOR OBTAINING ALL NECESSARY PERMITS AND APPROVALS FROM THE LOCAL ELECTRICAL CONTRACTOR AND OTHER AFFECTING AGENCIES.
3. ALL WIRING SHALL BE INSTALLED IN ACCORDANCE WITH THE NATIONAL ELECTRICAL CODE (NEC) AS AMENDED BY THE LOCAL ELECTRICAL CONTRACTOR AND OTHER AFFECTING AGENCIES. THE CONTRACTOR SHALL BE RESPONSIBLE FOR OBTAINING ALL NECESSARY PERMITS AND APPROVALS FROM THE LOCAL ELECTRICAL CONTRACTOR AND OTHER AFFECTING AGENCIES.
4. ALL WIRING SHALL BE INSTALLED IN ACCORDANCE WITH THE NATIONAL ELECTRICAL CODE (NEC) AS AMENDED BY THE LOCAL ELECTRICAL CONTRACTOR AND OTHER AFFECTING AGENCIES. THE CONTRACTOR SHALL BE RESPONSIBLE FOR OBTAINING ALL NECESSARY PERMITS AND APPROVALS FROM THE LOCAL ELECTRICAL CONTRACTOR AND OTHER AFFECTING AGENCIES.
5. ALL WIRING SHALL BE INSTALLED IN ACCORDANCE WITH THE NATIONAL ELECTRICAL CODE (NEC) AS AMENDED BY THE LOCAL ELECTRICAL CONTRACTOR AND OTHER AFFECTING AGENCIES. THE CONTRACTOR SHALL BE RESPONSIBLE FOR OBTAINING ALL NECESSARY PERMITS AND APPROVALS FROM THE LOCAL ELECTRICAL CONTRACTOR AND OTHER AFFECTING AGENCIES.
6. ALL WIRING SHALL BE INSTALLED IN ACCORDANCE WITH THE NATIONAL ELECTRICAL CODE (NEC) AS AMENDED BY THE LOCAL ELECTRICAL CONTRACTOR AND OTHER AFFECTING AGENCIES. THE CONTRACTOR SHALL BE RESPONSIBLE FOR OBTAINING ALL NECESSARY PERMITS AND APPROVALS FROM THE LOCAL ELECTRICAL CONTRACTOR AND OTHER AFFECTING AGENCIES.
7. ALL WIRING SHALL BE INSTALLED IN ACCORDANCE WITH THE NATIONAL ELECTRICAL CODE (NEC) AS AMENDED BY THE LOCAL ELECTRICAL CONTRACTOR AND OTHER AFFECTING AGENCIES. THE CONTRACTOR SHALL BE RESPONSIBLE FOR OBTAINING ALL NECESSARY PERMITS AND APPROVALS FROM THE LOCAL ELECTRICAL CONTRACTOR AND OTHER AFFECTING AGENCIES.
8. ALL WIRING SHALL BE INSTALLED IN ACCORDANCE WITH THE NATIONAL ELECTRICAL CODE (NEC) AS AMENDED BY THE LOCAL ELECTRICAL CONTRACTOR AND OTHER AFFECTING AGENCIES. THE CONTRACTOR SHALL BE RESPONSIBLE FOR OBTAINING ALL NECESSARY PERMITS AND APPROVALS FROM THE LOCAL ELECTRICAL CONTRACTOR AND OTHER AFFECTING AGENCIES.
9. ALL WIRING SHALL BE INSTALLED IN ACCORDANCE WITH THE NATIONAL ELECTRICAL CODE (NEC) AS AMENDED BY THE LOCAL ELECTRICAL CONTRACTOR AND OTHER AFFECTING AGENCIES. THE CONTRACTOR SHALL BE RESPONSIBLE FOR OBTAINING ALL NECESSARY PERMITS AND APPROVALS FROM THE LOCAL ELECTRICAL CONTRACTOR AND OTHER AFFECTING AGENCIES.

CITIZENS' TELEPHONE CO.

SOUTH EXCHANGE BUILDING

BUILDING REMODELING

103-113 EAST FOURTH STREET COVINGTON, KY

<p style="margin: 0;">DUNN & TITUS PSC</p> <p style="font-size: 8px; margin: 0;">THOMAS R. DUNN P.E. JAMES L. TITUS Ph.D. M.A. ARCHITECTURE PLANNING INTERIOR DESIGN 700 SOUTH ST., 2ND FLOOR COVINGTON, KY 40301 TEL: 502-573-4444</p>	
---	--

LP-2 PANELBOARD SCHEDULE 2 FLR. APARTMENT

LOAD SERVED	CIRCUIT						LOAD SERVED					
	A	B	C	D	E	F	G	H	I	J	K	L
RANGE							2 HO	1 HO	2 HO	2 HO	2 HO	1 HO
EMERGENCY							1 HO	1 HO	1 HO	1 HO	1 HO	1 HO
LIGHTING							2 HO	2 HO	2 HO	2 HO	2 HO	2 HO
RECEPTACLES							1 HO	1 HO	1 HO	1 HO	1 HO	1 HO
SPARE							2 HO	2 HO	2 HO	2 HO	2 HO	2 HO
SPARE							2 HO	2 HO	2 HO	2 HO	2 HO	2 HO
SPARE							2 HO	2 HO	2 HO	2 HO	2 HO	2 HO
SPARE							2 HO	2 HO	2 HO	2 HO	2 HO	2 HO
SPARE							2 HO	2 HO	2 HO	2 HO	2 HO	2 HO
TOTAL PHASED LOAD A - 149 AMP	TOTAL PHASED LOAD B - 86 AMP											
DEMAND FACTOR 0.75	112 AMP						64 AMP					
CONDUCTOR SIZE	250 MCM CU AL W/ 75 DEG C											

M-1 PANELBOARD SCHEDULE BASEMENT MAIN PANEL

LOAD SERVED	CIRCUIT												LOAD SERVED											
	1	2	3	4	5	6	7	8	9	10	11	12	13	14	15	16	17	18	19	20	21	22		
250 AMP SERVICE																								
125 AMP SERVICE																								
50 AMP SERVICE																								
25 AMP SERVICE																								
TOTAL PHASED LOAD A - 292 AMP	TOTAL PHASED LOAD B - 224 AMP																							
DEMAND FACTOR 0.75	219 AMP												168 AMP											
CONDUCTOR SIZE	350 MCM CU AL W/ 75 DEG C																							