

THE VILLAGE OF DAVENTRY AT SUMMIT PARK



A 2020 BUILD “READY TO GO” **4130 Parkview Drive, Blue Ash, OH 45242**

Wow! Enjoy 3200 Square Foot of Lock Up & Leave Living. Expansive Open Spaces with 10’ Ceilings, Gourmet Island Kitchen, 2022 Executive First Floor Study, Covered Porches (front & rear), Primary Suite with Spa Bath, easy care Hardwood flooring. Ask about our Design services to finish an additional 1800 Square Foot Lower Level Space from \$30/foot. Happening Summit Park’s 130 acres of trails, dining, recreation & gold is at your doorstep. Does it get any better?

ADDRESS: 4130 Parkview Drive
SUBURB: Blue Ash
LOT SIZE: 0.10 Acres
SEMI-ANNUAL TAX: \$5,432.48
EASEMENTS: Of Record
RESTRICTIONS: Of Record
STYLE: Traditional

AGE: 2020
CONSTRUCTION: Brick
FOUNDATION: Poured
BASEMENT: Full
ROOF: Shingle
EVEN BILLING: \$160.00
HEAT: Gas/Forced Air

COOLING: Central Air
ELEM: Sycamore Community
HS: Sycamore High School
PElem: Choice
PHigh: Choice
WATER: Public
SEWER: Public

Quoting: \$1,050,000



Exclusively Represented By: *Gail S. Coughlin*
Email: gail@gcoughlin.com *Direct: 513-604-1731*
Photos available at: www.gcoughlin.com

**GLOBAL
LUXURY**



COLDWELL BANKER REALTY

OWNED & OPERATED BY NRT, INC.















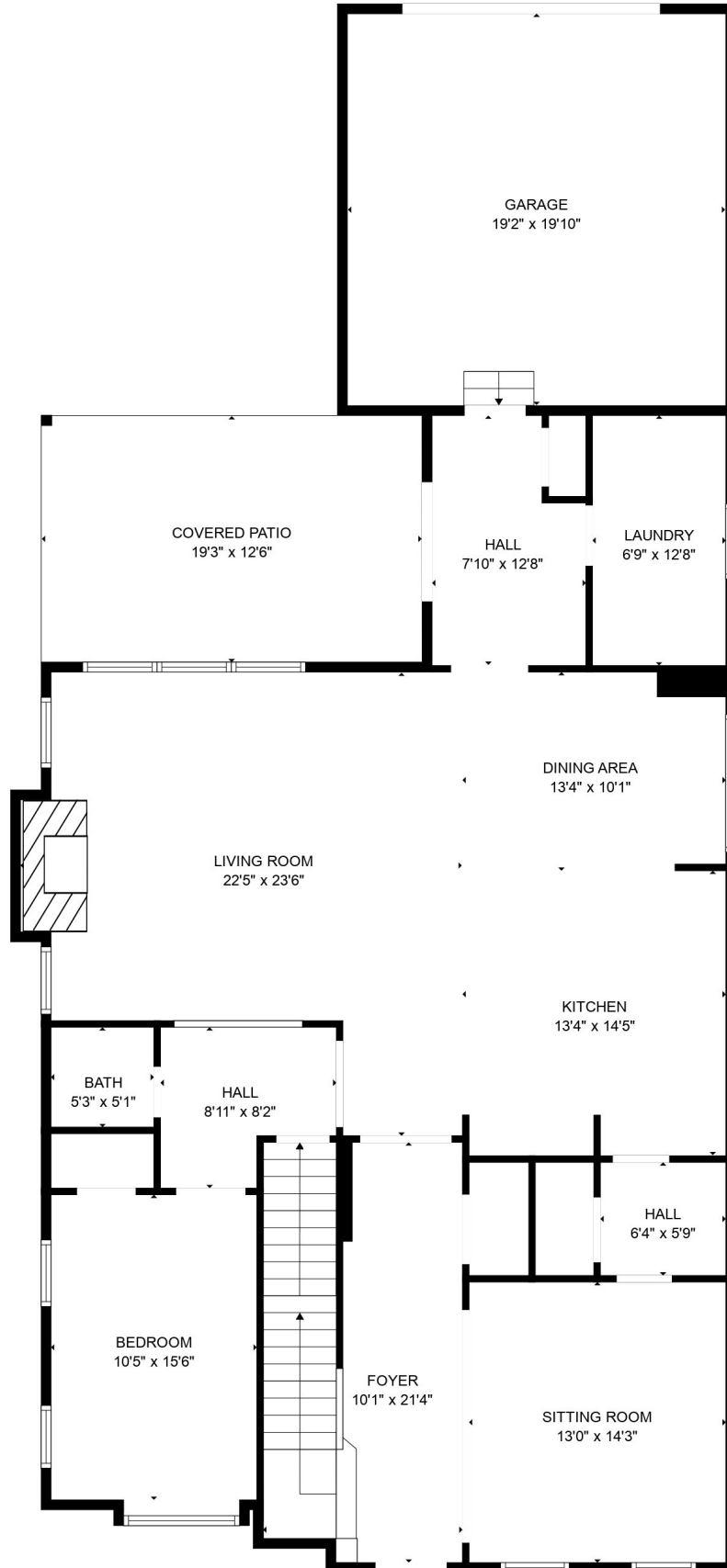


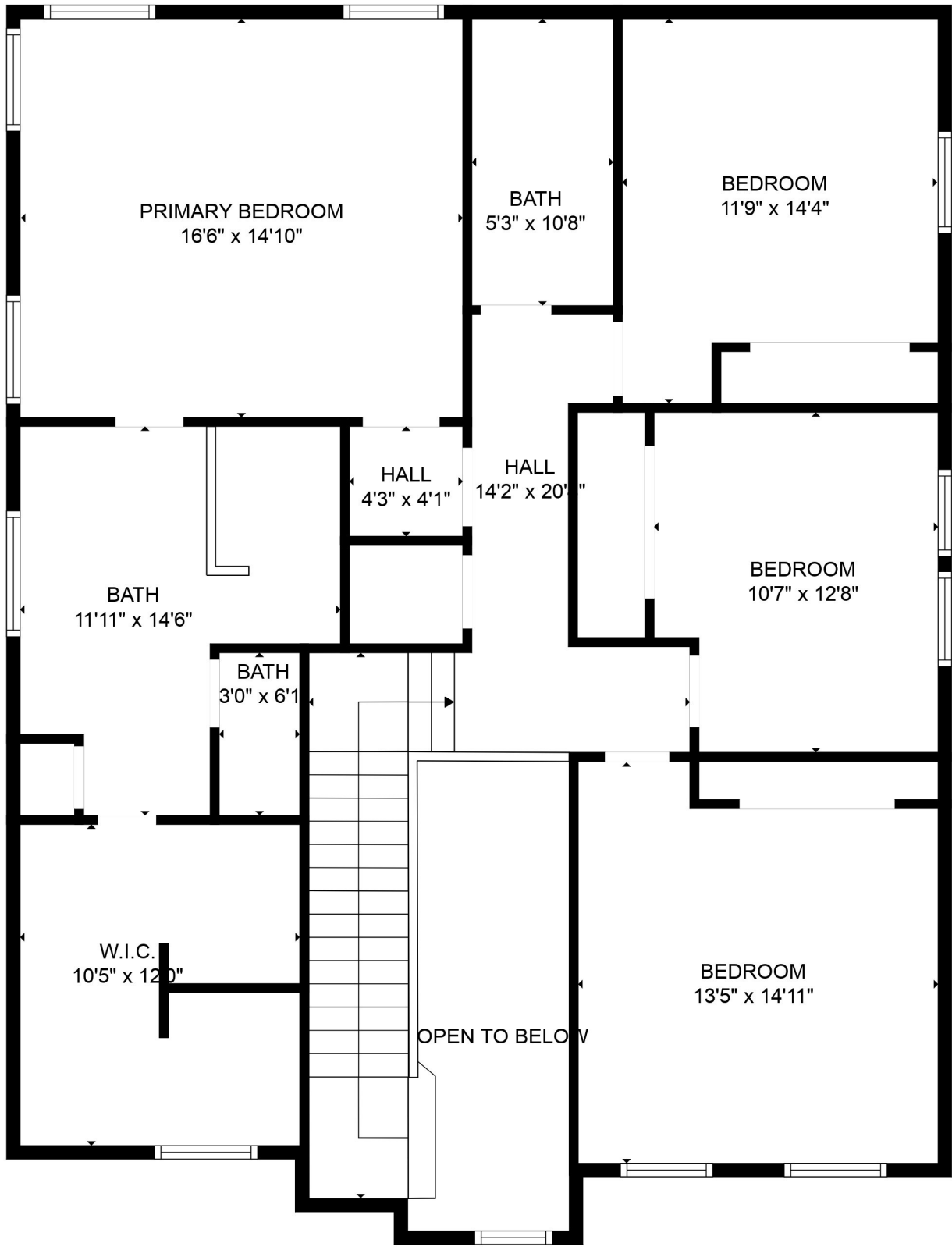




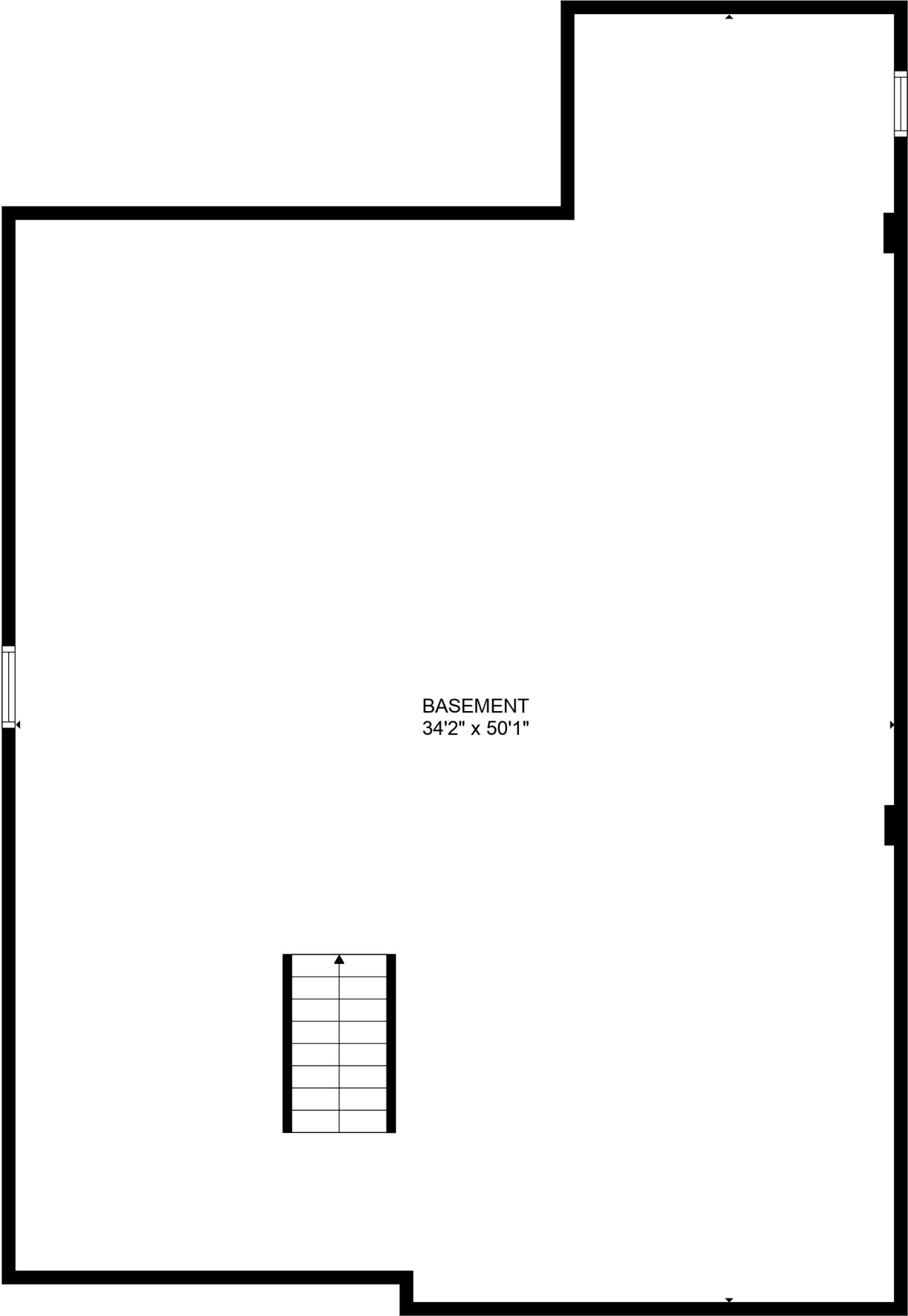
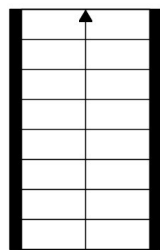








BASEMENT
34'2" x 50'1"



The Neighborhoods at Summit Park offers a 110-acre walkable, mixed-use development consistent with the city of Blue Ash's vision as laid out in its Land Use Plan for Summit Park District. The project will leverage Blue Ash's \$75 million investment in Summit Park, serve as a catalyst for development across the entire Summit Park District, and become a regional draw for businesses and investment.

The master plan for the development is built upon the fundamental principles of highly successful, walkable, mixed-use districts and establishes a framework for the current and future integration of Class A office spaces, a diverse mix of high quality rental and owner-occupied housing, specialty retail and dining venues, and a variety of entertainment, fitness and leisure options.

Summit Park establishes four distinct but closely integrated neighborhoods. Streets and open spaces are designed to create a vibrant village atmosphere and high-quality sense of place. The development will contain uses that complement and build upon the energy of the park and provide a place for people to gather, shop, eat, work and live. The Neighborhoods at Summit Park will include exceptional walkability to the park and adjoining neighborhoods and offer of well landscaped public spaces with rich amenities. The development will adhere to high standards and construction, and enhance Blue Ash's reputation as one of the region's most desirable places to work, live, and visit.